

Phone: 713-677-0928  
 Toll Free: 877-797-5983  
 Fax: 713-490-3223

Email: [Info@skytekimaging.com](mailto:Info@skytekimaging.com)



# REGULAR ROOF REPORT

Order/Claim Number:

## Client Information

## Property Information

Customer Information:

Location Map : <https://goo.gl/S1V94P>

## Summary of Lengths, Areas and Pitches Table

Total Area (Sqft)	4044	Pitched Planes (Sqft)	4044
Primary Pitch	4:12, 10:12, 12:12	Flat Planes (Sqft)	0
Ridges (ft)	112	Valleys (ft)	102
Hips (ft)	100	Rakes + Eaves (ft)	380
Rakes (ft)	120	Step Flashing (ft)	40
Eaves (ft)	261	Total Skylights	0
Apron Flashing (ft)	52	Total Chimneys	0
Solar Panels	0	Ground Floor Perimeter	289

Notes: All Measurements are rounded up to the nearest Square foot/ Linear foot where appropriate.

## Pitches Table (Pitch By Area)

Pitch/Slope	Area
4:12	9
10:12	2839
12:12	1197
<b>Total</b>	<b>4044</b>

Area (SqFt)





# Oblique Photos



North Side View



South Side View

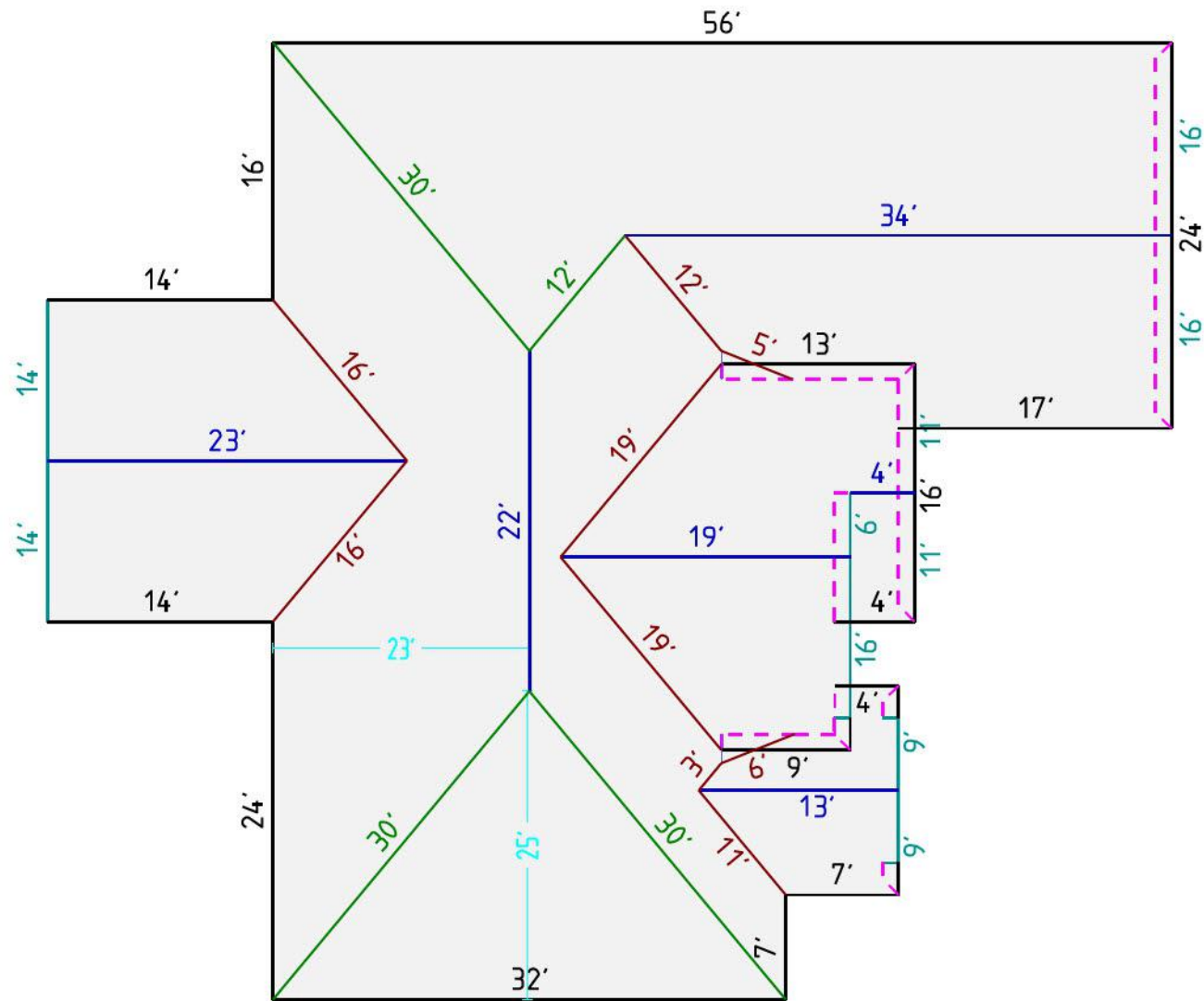


East Side View



West Side View

# Lengths Diagram



## Legend

Eaves = 261 ft

Rakes = 120 ft

Ridges = 112 ft

Hips = 100 ft

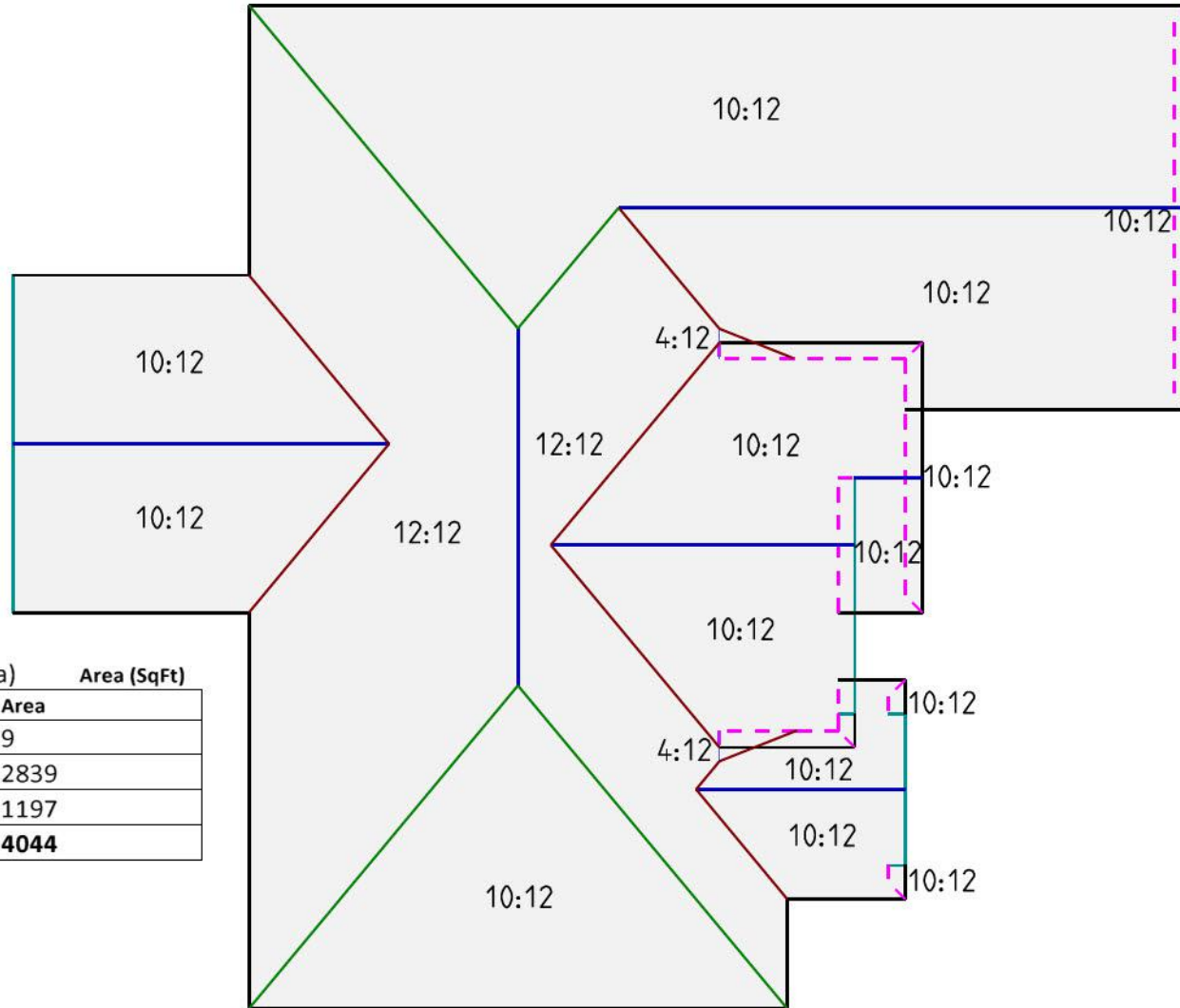
Valleys = 102 ft

Apron Flashing = 52 ft

Step Flashing = 40 ft



# Roof Pitches Diagram

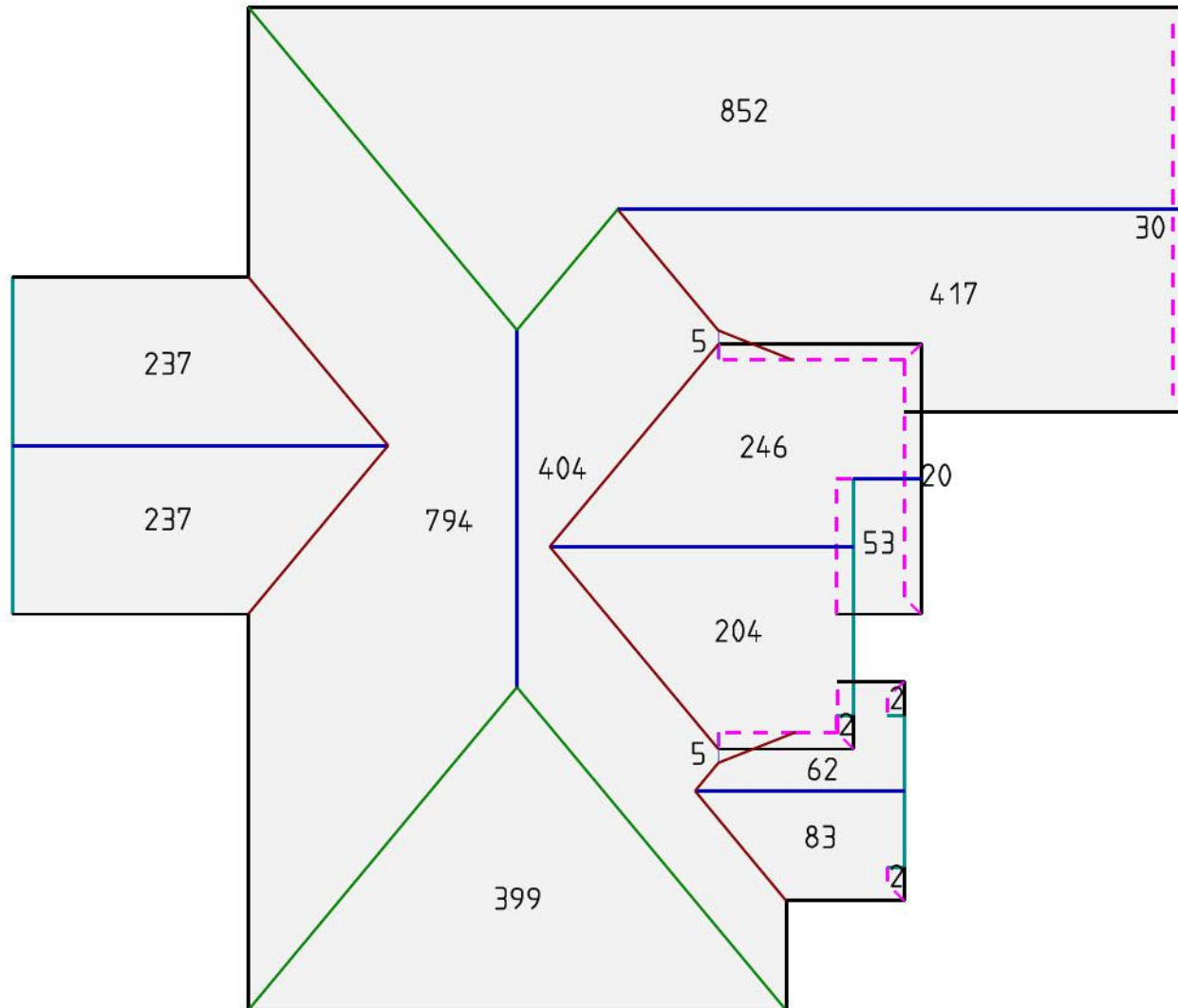


(Pitch By Area)

Pitch/Slope	Area (SqFt)
4:12	9
10:12	2839
12:12	1197
<b>Total</b>	<b>4044</b>



# Roof Areas Diagram



# Waste Calculations

Waste Factor Calculation for 4044 SqFt (40.44) Sq (SqFt) = Square Feet, (Sq) = Squares

5%	10%	12%	15%	18%	20%	25%
4246 SqFt	4448 SqFt	4529 SqFt	4650 SqFt	4771 SqFt	4852 SqFt	5054 SqFt
42 Sq	44.48 Sq	45.29 Sq	46.50 Sq	47.71 Sq	48.52 Sq	50.54 Sq



All information and content on this report are subject to applicable statutes and regulations, furnished "as is", without warranty of any kind, express or implied, including but not limited to implied warranties of merchantability, fitness for a particular purpose, or non-infringement. The contents of this report are protected by applicable copyright laws. No permission is granted to copy, distribute, modify, post or frame any text, graphics, or user interface design or logos.

