

Phone: 713-677-0928  
Toll Free: 877-797-5983  
Fax: 713-490-3223

Email: [Info@skytekimaging.com](mailto:Info@skytekimaging.com)



# WALL MEASUREMENT REPORT

Order/Claim Number: 000001

Thursday, November 12, 2015

## Client Information

**Skytek**

Email:  
Phone:

## Property Information

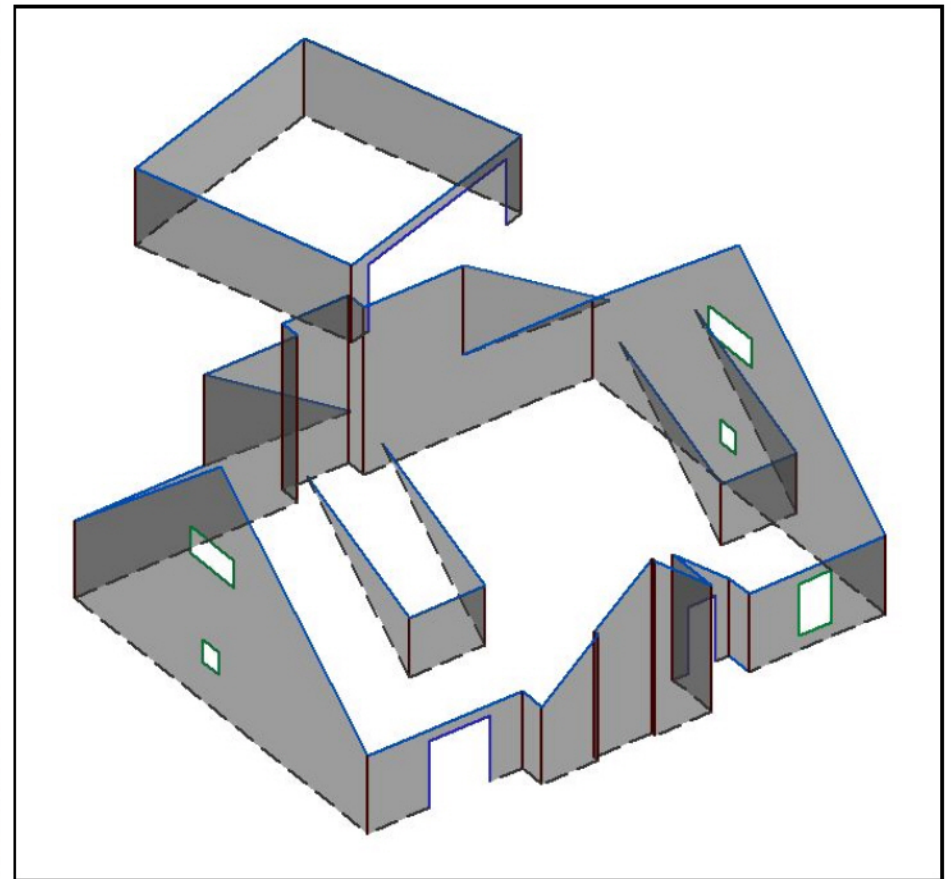
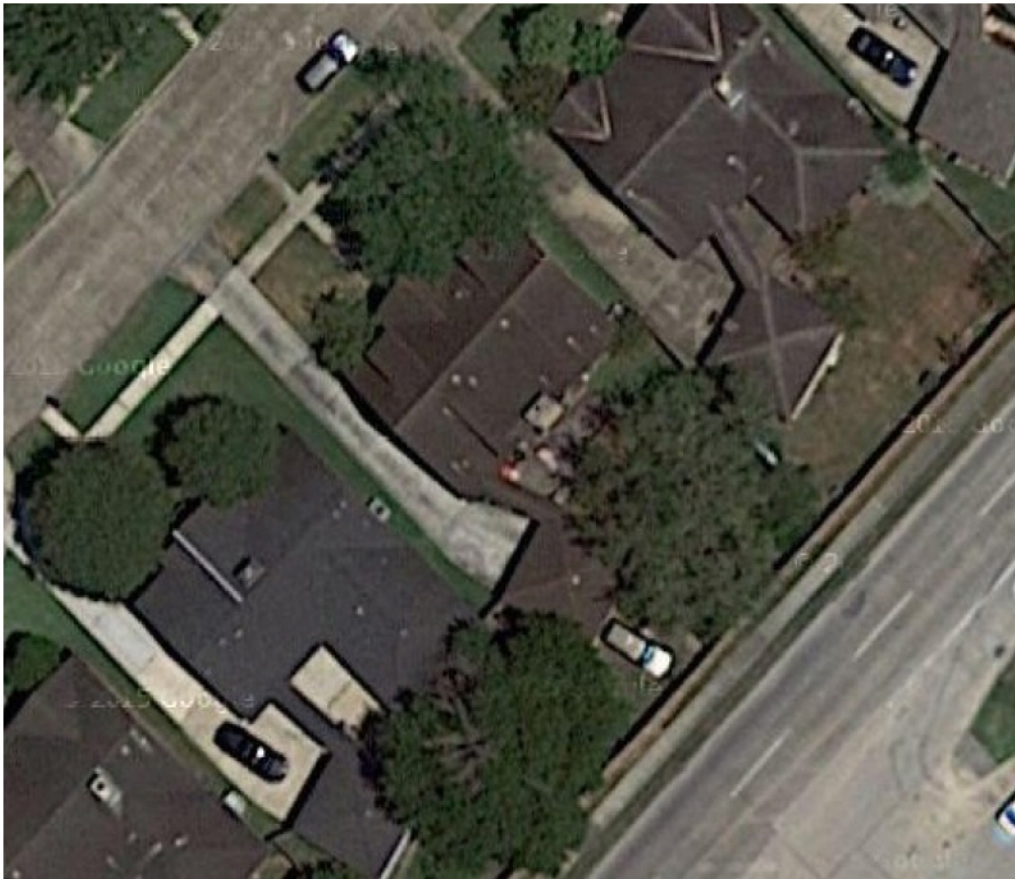
Customer Information:

Location Map : <http://goo.gl/Tme0Cr>

## Wall Report Summary

Total Wall Area (Sqft)	3126	Number of External Corners	15
Total Wall Length (ft)	372	Number of Internal Corners	13
External Corner Length (ft)	154	Windows Edges	8
Internal Corner Length (ft)	106	Windows Sills	7
Window Edge Length (ft)	18	Window Heads	5
Window Sill Length (ft)	28	Door Edges	6
Window Head Length (ft)	18	Door Heads	3
Door Edge Length (ft)	36	Number of Wall Tops	33
Door Head Length (ft)	%26	Number of Wall Bases	35
Number of Walls	30	Notes: All Measurements are rounded up to the nearest Square foot/ Linear foot where appropriate.	

Above Image and Wall Isometric View





## Oblique Photos



**North Side View**



**South Side View**

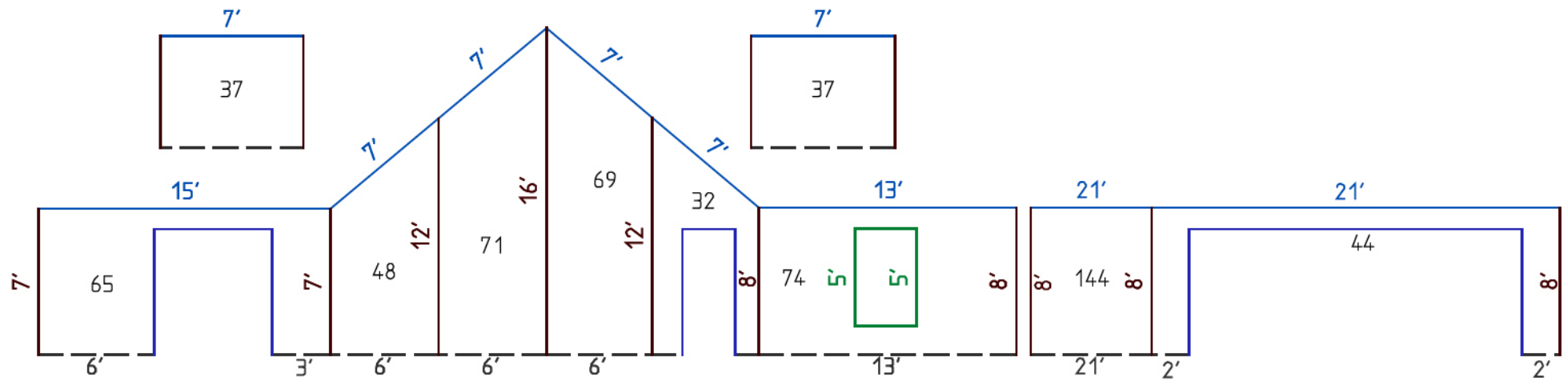


**East Side View**



**West Side View**

## Front View



### Legend (Line Colours)

Eaves

Rakes

Ridges

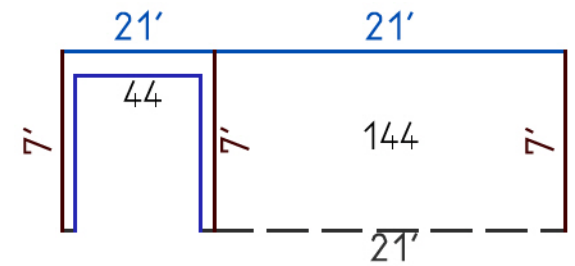
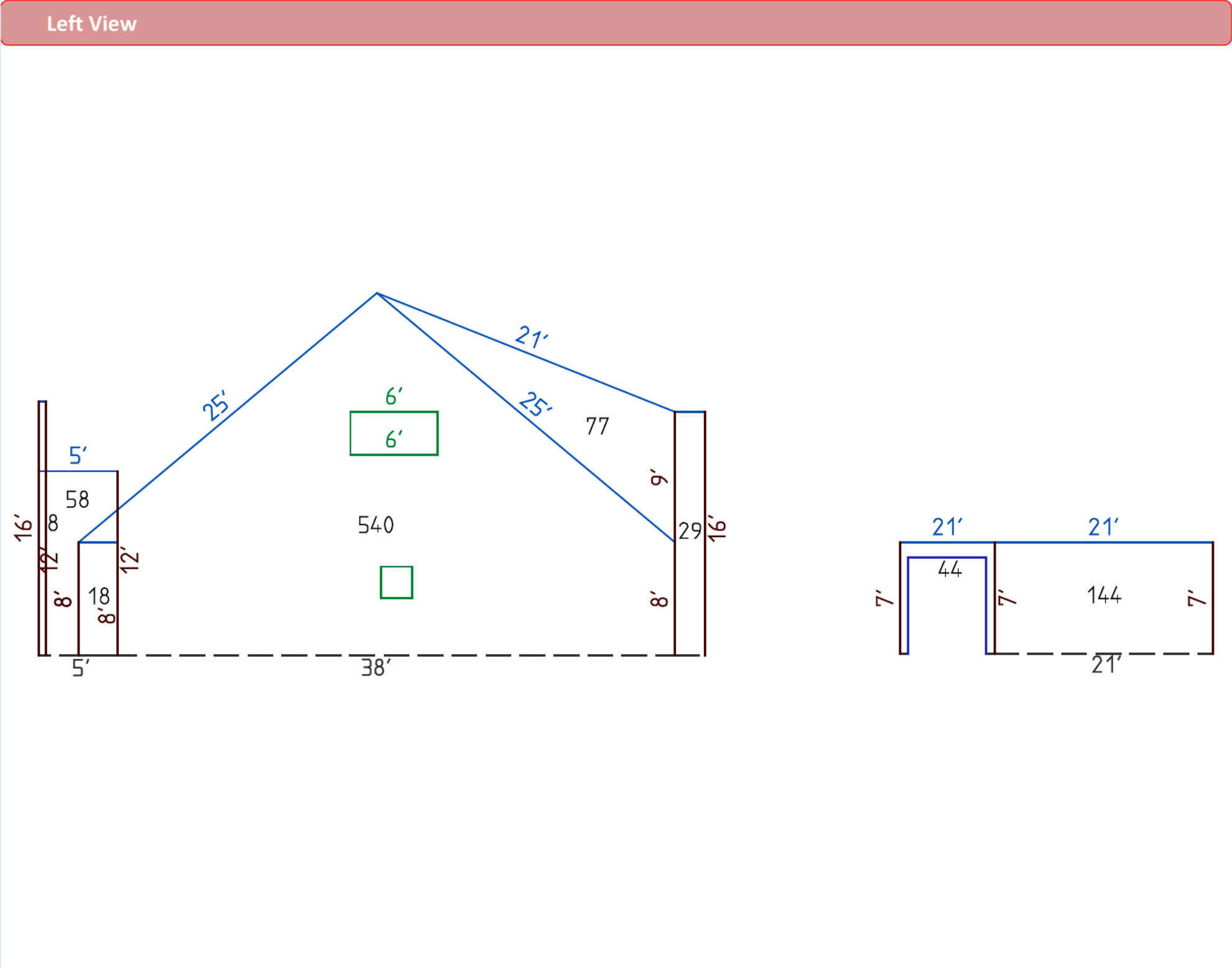
Hips

Valleys

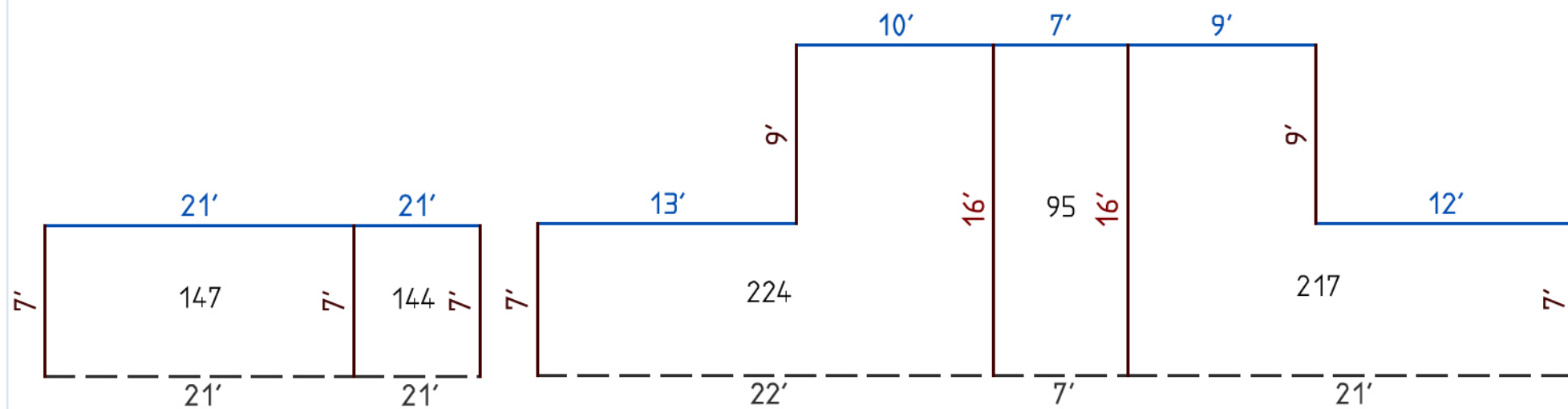
Apron Flashing

Step Flashing

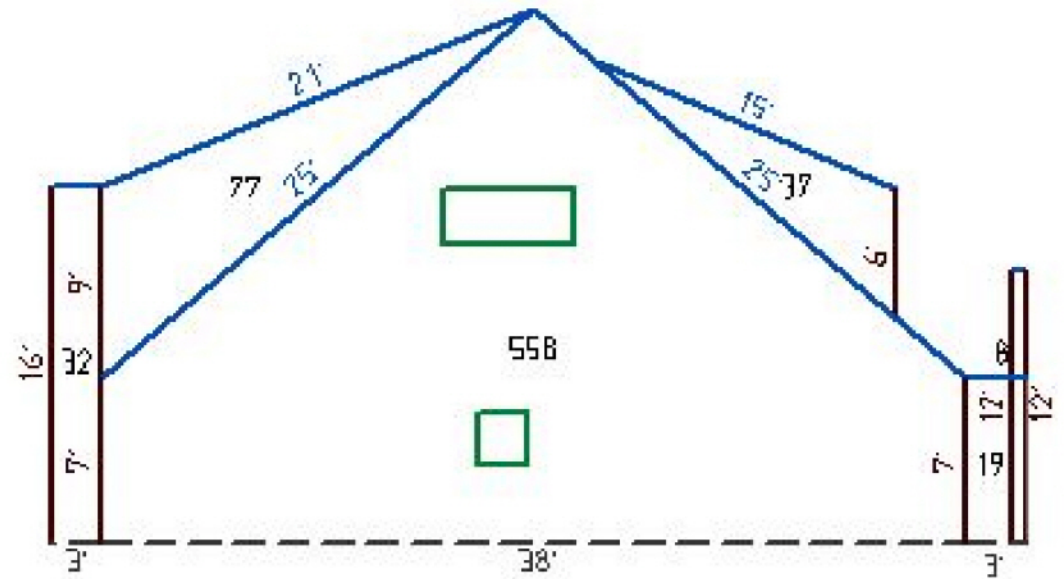
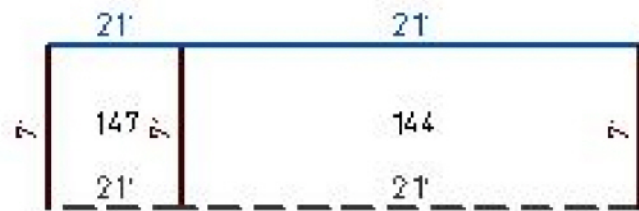
Parapet Wall



## Back View



# Right View





Wall Waste Calculations

Waste Factor Calculation for 3126 (SqFt) =Square Feet, (Sq) = Squares						
5%	10%	12%	15%	18%	20%	25%
3283 SqFt	3439 SqFt	3501 SqFt	3595 SqFt	3689 SqFt	3751 SqFt	3908 SqFt
32.83 Sq	34.39 Sq	35.01 Sq	35.95 Sq	36.89 Sq	37.51 Sq	39.08 Sq



All information and content on this report are subject to applicable statutes and regulations, furnished "as is", without warranty of any kind, express or implied, including but not limited to implied warranties of merchant ability, fitness for a particular purpose, or non-infringement. The contents of this report are protected by applicable copyright laws. No permission is granted to copy, distribute, modify, post or frame any text, graphics, or user interface design or logos. Skytek Imaging is NOT responsible for inaccurate measurements due to faulty 3rd party data or information including human error and therefore we recommend that anyone using these measurements verify a few sides of the roofing report before making a material purchase or offering a bid. The Copyrighted Materials are provided to you "as is," and you agree to use it at your own risk.