

Phone: 713-677-0928
Toll Free: 877-797-5983
Fax: 713-490-3223

Email: Info@skytekimaging.com



REGULAR ROOF REPORT

Order/Claim Number:

Client Information

Property Information

Customer Information:

Location Map : <https://goo.gl/uYXLwK>

Summary of Length - (Area and Pitch Table)

Total Area (Sqft)	3787	Pitched Planes (Sqft)	3787	Pitch Table (Pitch By Area) Area (SqFt)		
Primary Pitch	4:12, 7:12, 8:12	Flat Planes (Sqft)	0	Pitch/Slope	Area	
Ridges (ft)	59	Valleys (ft)	96	4:12	110	
Hips (ft)	304	Rakes + Eaves (ft)	379	7:12	333	
Rakes (ft)	42	Step Flashing (ft)	47	8:12	3344	
Eaves (ft)	339	Total Skylights	4	Total	3787	
Apron Flashing (ft)	102	Total Chimneys	1			
Solar Panels	0	Ground Floor Perimeter	302			

Notes: All Measurements are rounded up to the nearest Square foot/ Linear foot where appropriate.





Summary Per Structure (2)

MAIN BUILDING (BREAK DOWN)

Total Area (Sqft)	3677
Ridges (ft)	48
Hips (ft)	304
Valleys (ft)	96
Rakes (ft)	23
Eaves (ft)	316
Rakes + Eaves (ft)	337
Apron Flashing (ft)	102
Step Flashing (ft)	47

A1 (BREAK DOWN)

Total Area (Sqft)	110
Ridges (ft)	12
Hips (ft)	0
Valleys (ft)	0
Rakes (ft)	19
Eaves (ft)	23
Rakes + Eaves (ft)	42
Apron Flashing (ft)	0
Step Flashing (ft)	0

Notes



North Side View



South Side View



East Side View

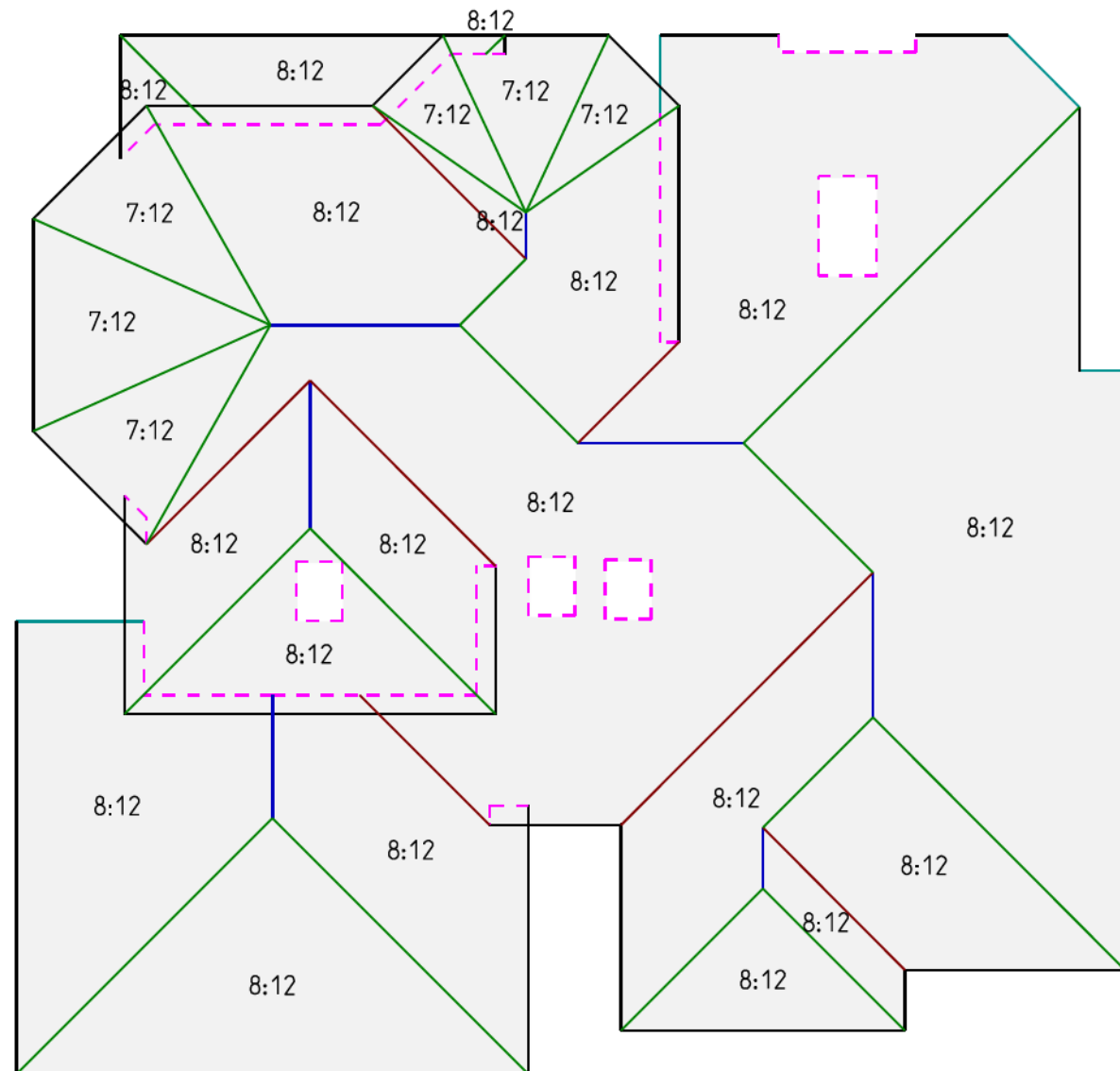


West Side View



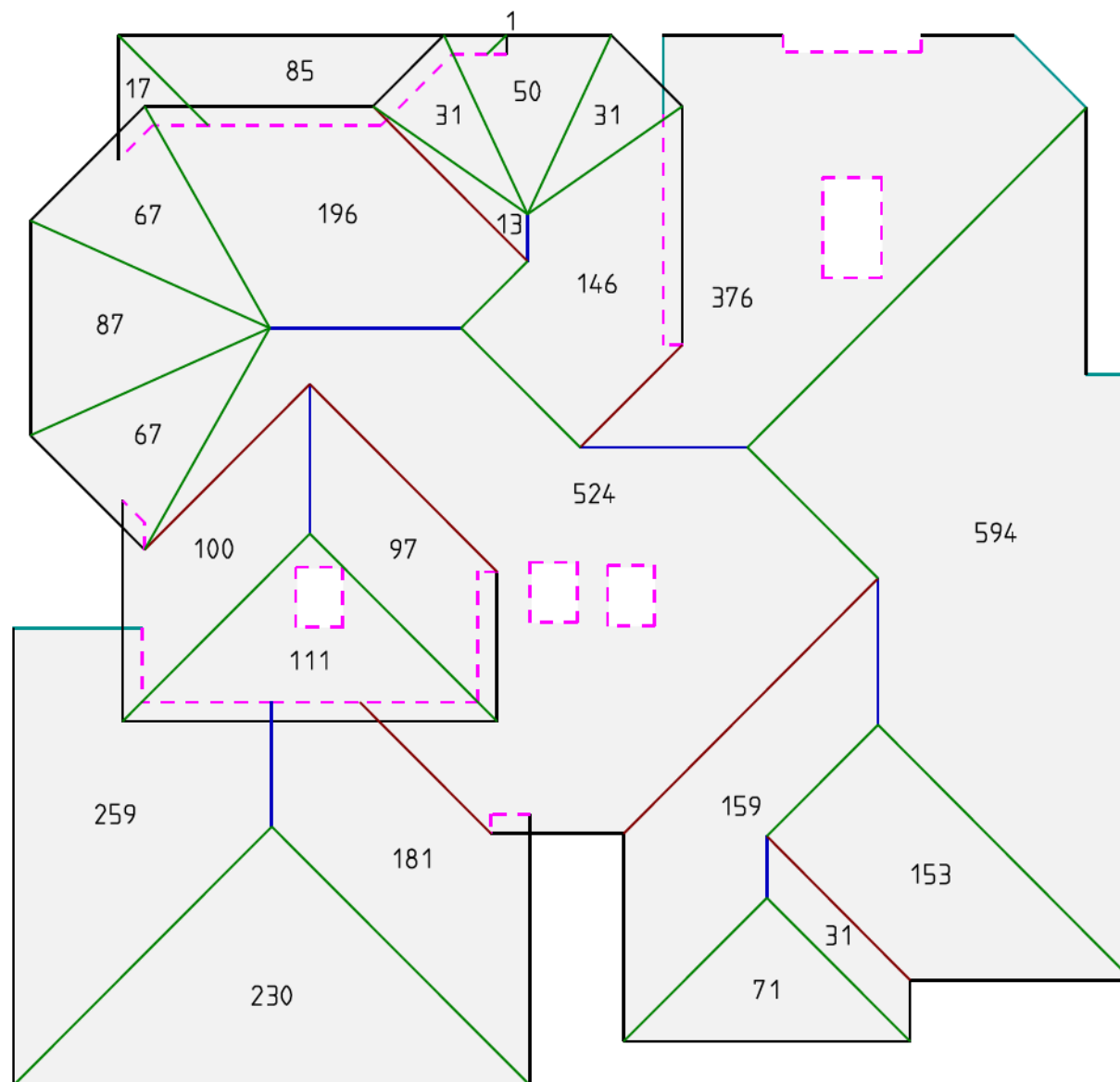
Step Flashing

4:12
4:12



A1

55
55



Waste Factor Calculation for 3787 SqFt (37.87) Sq (SqFt) =Square Feet, (Sq) = Squares

5%	10%	12%	15%	18%	20%	25%
3976 SqFt	4166 SqFt	4241 SqFt	4355 SqFt	4469 SqFt	4544 SqFt	4734 SqFt
39.76 Sq	41.66 Sq	42.41 Sq	43.55 Sq	44.69 Sq	45.44 Sq	47.34 Sq



All information and content on this report are subject to applicable statutes and regulations, furnished "as is", without warranty of any kind, express or implied, including but not limited to implied warranties of merchant ability, fitness for a particular purpose, or non-infringement. The contents of this report are protected by applicable copyright laws. No permission is granted to copy, distribute, modify, post or frame any text, graphics, or user interface design or logos. Skytek Imaging is NOT responsible for inaccurate measurements due to faulty 3rd party data or information including human error and therefore we recommend that anyone using these measurements verify a few sides of the roofing report before making a material purchase or offering a bid. The Copyrighted Materials are provided to you "as is," and you agree to use it at your own risk.